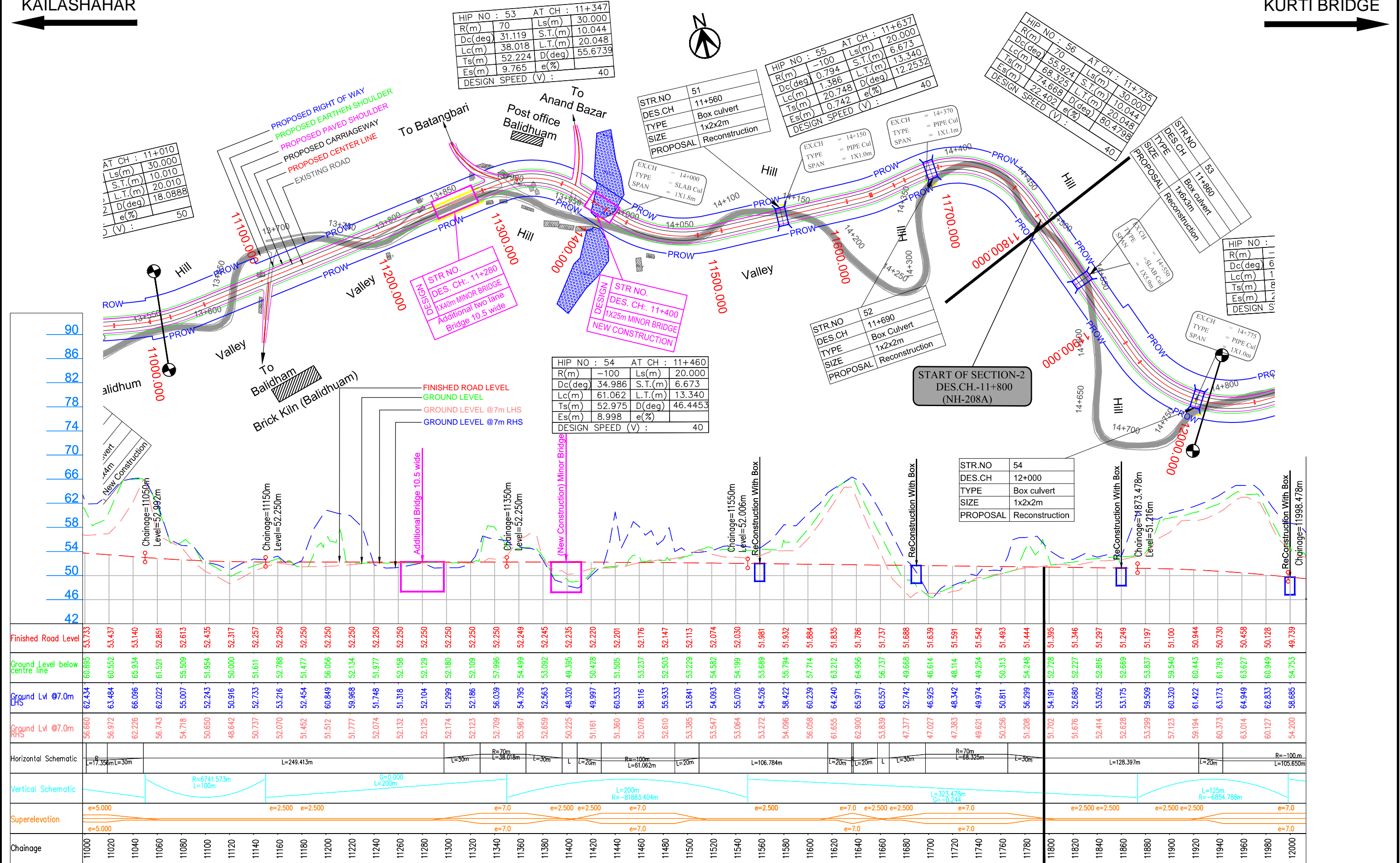


KAILASHAHAR

KURTI BRIDGE



LEGEND:

- Design
- Structure
- Existing Road
- Pond/River

Project Title:-

CONSULTANCY SERVICES FOR FEASIBILITY STUDY, PREPARATION OF DETAILED PROJECT REPORT AND PROVIDING PRE-CONSTRUCTION SERVICES FOR UP-GRADATION OF SELECTED ROAD STRETCHES / CORRIDORS TO TWO LANE WITH PAVED SHOULDER NH CONFIGURATION UNDER BHARAT MALA PROJECT AND NATIONAL HIGHWAYS CONNECTIVITY TO BACKWARD AREAS/RELIGIOUS/TOURIST PLACES OF THE COUNTRY IN THE STATE OF TRIPURA.

KAILASHAHAR - KURTI BRIDGE SECTION-2

CLIENT:

NATIONAL HIGHWAYS & INFRASTRUCTURE DEVELOPMENT CORPORATION LTD

Drawing Title:

PLAN & PROFILE
DES.CH. 11+000 TO 12+000

Drawing No. :- TASPL/NHIDCL/DDPR/P&P

Scale :- 1:2000

Drn Deepak **Dgn.** B.Mishra **Appd** B.S Pandey

Sheet : 01 OF 15

Date DEC - 2019

CONSULTANT:

TASPL

Technocrats Advisory Services Private Limited
in association with Vaishnavi Infratech Services P. Ltd
Flat No. 68, Ajanta Apartment, 36 I.P.Extension
Patparganj, Delhi-110092

KAILASHAHAR

KURTI BRIDGE



HIP NO : 57	AT CH : 12+003
R(m) -100	Ls(m) 20.000
Dc(deg) 60.533	S.T.(m) 6.673
Lc(m) 105.650	L.T.(m) 13.340
Ts(m) 82.762	D(deg) 71.9924
Es(m) 23.807	e(%) 40
DESIGN SPEED (V) :	

EX.CH	= 15+000
TYPE	= PIPE Cul
SPAN	= 1X1.0m

EX.CH	= 15+150
TYPE	= PIPE Cul
SPAN	= 1X1.0m

STR.NO	56
DES.CH	12+710
TYPE	Box culvert
SIZE	1x3x4m
PROPOSAL	Reconstruction

Tower (Airtel)
Anand Bazaar

EX.CH	= 15+620
TYPE	= SLAB Cu
SPAN	= 1X2.0m

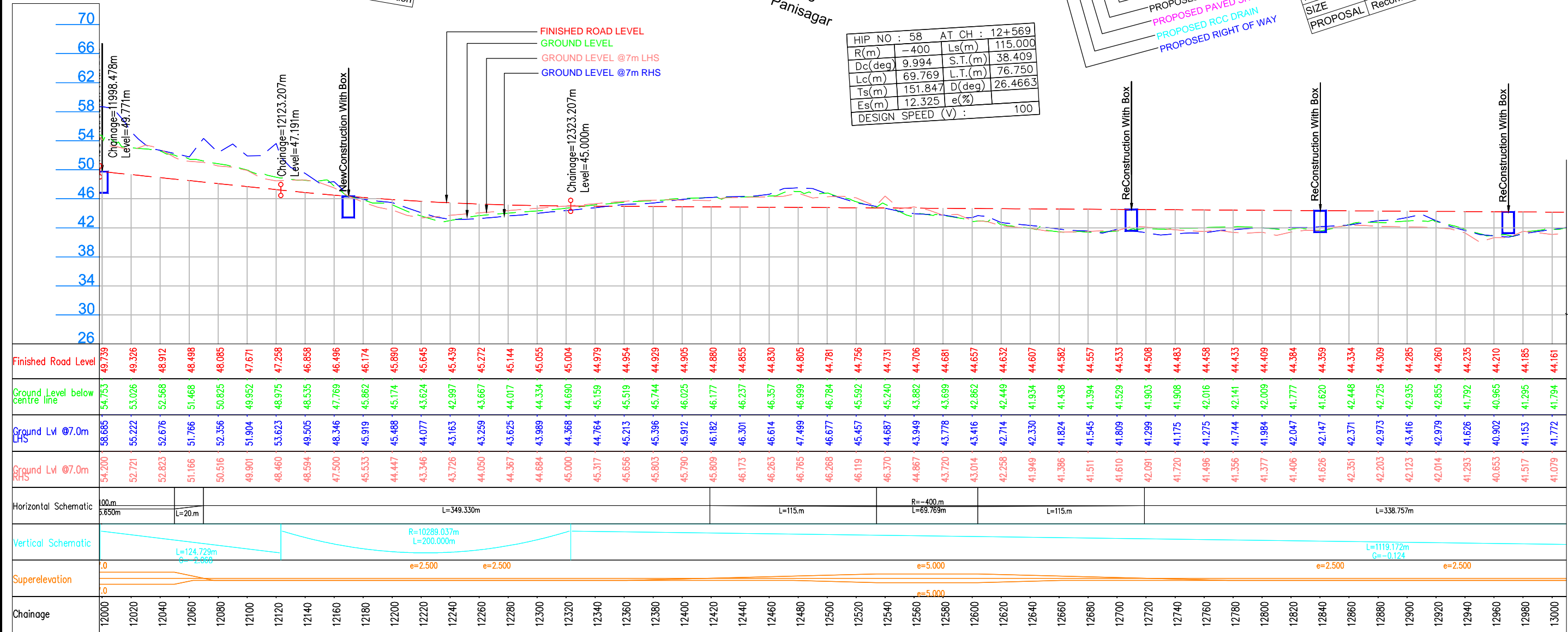
EX.CH	= 15+750
TYPE	= PIPE Cul
SPAN	= 2X1.0m

STR.NO	55
DES.CH	12+170
TYPE	Box Culvert
SIZE	1x2x3m
PROPOSAL	New Construction

HIP NO : 58	AT CH : 12+569
R(m) -400	Ls(m) 115.000
Dc(deg) 9.994	S.T.(m) 38.409
Lc(m) 69.769	L.T.(m) 76.750
Ts(m) 151.847	D(deg) 26.4663
Es(m) 12.325	e(%) 100
DESIGN SPEED (V) :	

STR.NO	57
DES.CH	12+840
TYPE	Box Culvert
SIZE	1x3x4m
PROPOSAL	Reconstruction

STR.NO	58
DES.CH	12+970
TYPE	Box culvert
SIZE	1x3x4m
PROPOSAL	Reconstruction



LEGEND :

- Design
- Structure
- Existing Road
- Pond/River

Project Title:-

CONSULTANCY SERVICES FOR FEASIBILITY STUDY, PREPARATION OF DETAILED PROJECT REPORT AND PROVIDING PRE-CONSTRUCTION SERVICES FOR UP-GRADATION OF SELECTED ROAD STRETCHES / CORRIDORS TO TWO LANE WITH PAVED SHOULDER NH CONFIGURATION UNDER BHARAT MALA PROJECT AND NATIONAL HIGHWAYS CONNECTIVITY TO BACKWARD AREAS/RELIGIOUS/TOURIST PLACES OF THE COUNTRY IN THE STATE OF TRIPURA.

KAILASHAHAR - KURTI BRIDGE SECTION-2

CLIENT:

NATIONAL HIGHWAYS & INFRASTRUCTURE DEVELOPMENT CORPORATION LTD

Drawing Title:

PLAN & PROFILE

Drawing No. :- TASPL/NHIDCL/DDPR/P&P

Scale :- 1:2000

Drn Deepak **Dgn.** B.Mishra **Appd** B.S Pandey

Sheet : 02 OF 15

Date DEC - 2019

CONSULTANT:

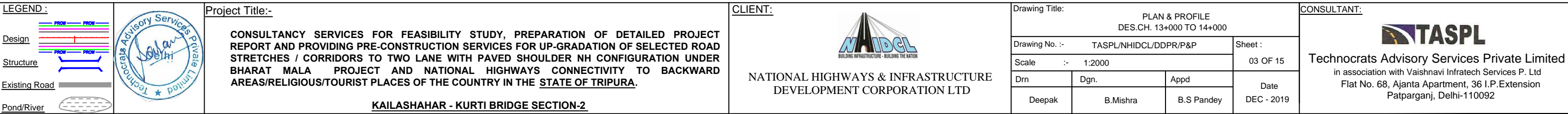
TASPL

Technocrats Advisory Services Private Limited

in association with Vaishnavi Infratech Services P. Ltd

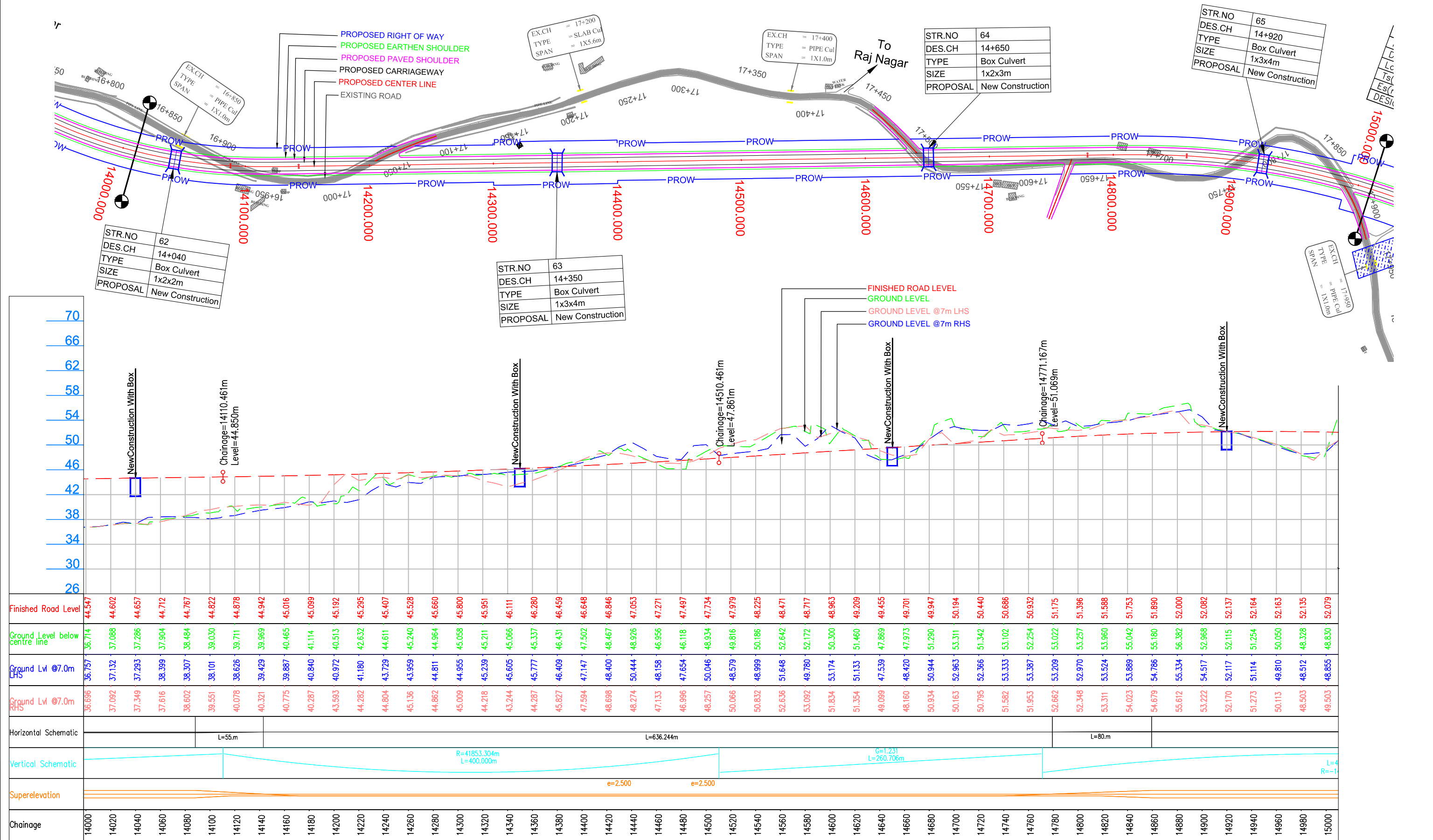
Flat No. 68, Ajanta Apartment, 36 I.P.Extension Patparganj, Delhi-110092

KURTI BRIDGE

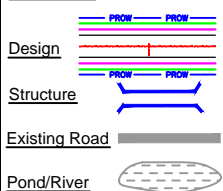


KAILASHAHAR

KURTI BRIDGE



LEGEND :



Project Title:-

CONSULTANCY SERVICES FOR FEASIBILITY STUDY, PREPARATION OF DETAILED PROJECT REPORT AND PROVIDING PRE-CONSTRUCTION SERVICES FOR UP-GRADATION OF SELECTED ROAD STRETCHES / CORRIDORS TO TWO LANE WITH PAVED SHOULDER NH CONFIGURATION UNDER BHARAT MALA PROJECT AND NATIONAL HIGHWAYS CONNECTIVITY TO BACKWARD AREAS/RELIGIOUS/TOURIST PLACES OF THE COUNTRY IN THE STATE OF TRIPURA.

KAILASHAHAR - KURTI BRIDGE SECTION-2

CLIENT:



NATIONAL HIGHWAYS & INFRASTRUCTURE
DEVELOPMENT CORPORATION LTD

Drawing Title:

PLAN & PROFILE
DES.CH. 14+000 TO 15+000

Drawing No. :- TASPL/NHIDCL/DDPR/P&P

Scale :- 1:2000

Drn Dgn Appd

Deepak B.Mishra B.S Pandey

Sheet :

04 OF 15

Date

DEC - 2019

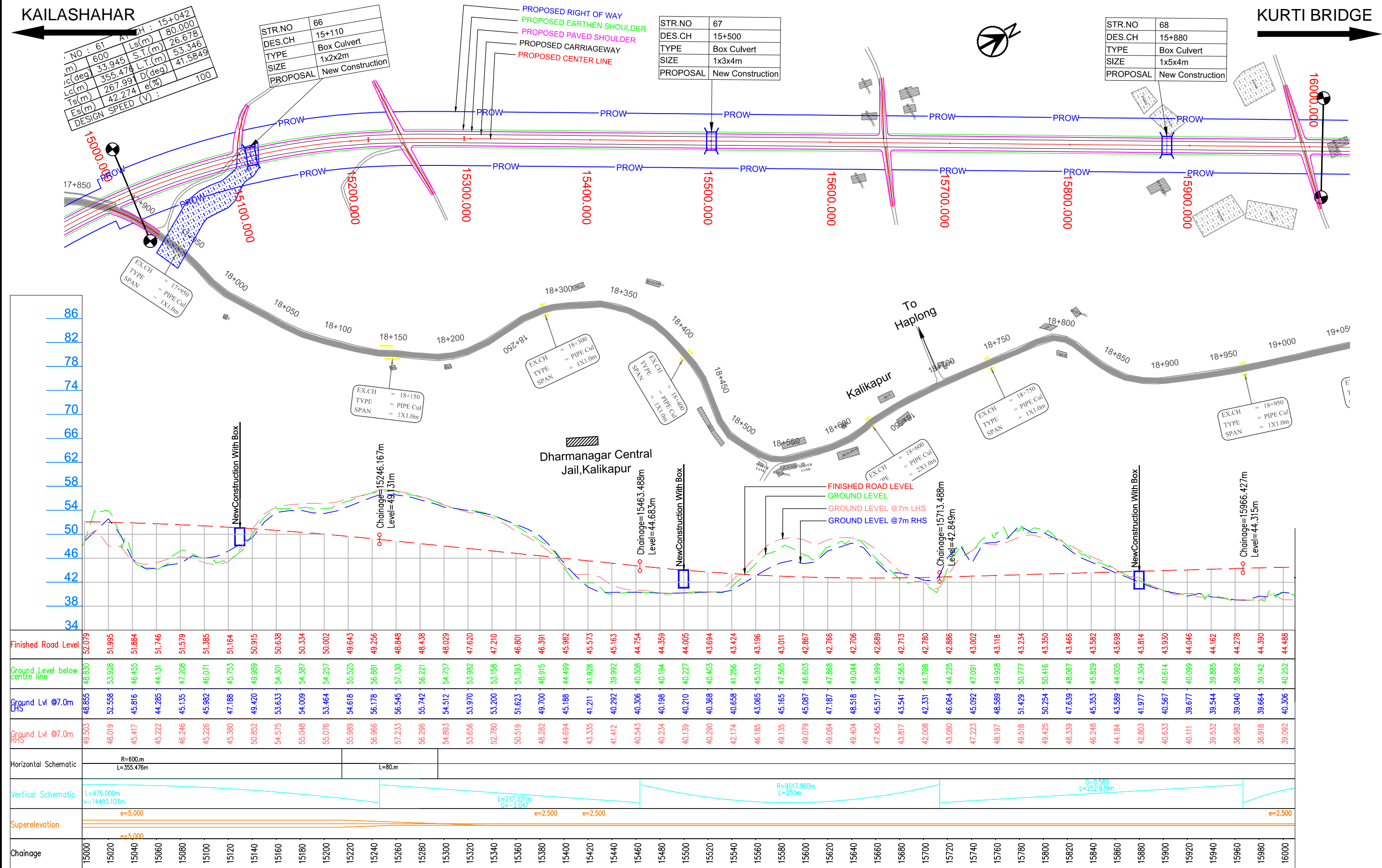
CONSULTANT:

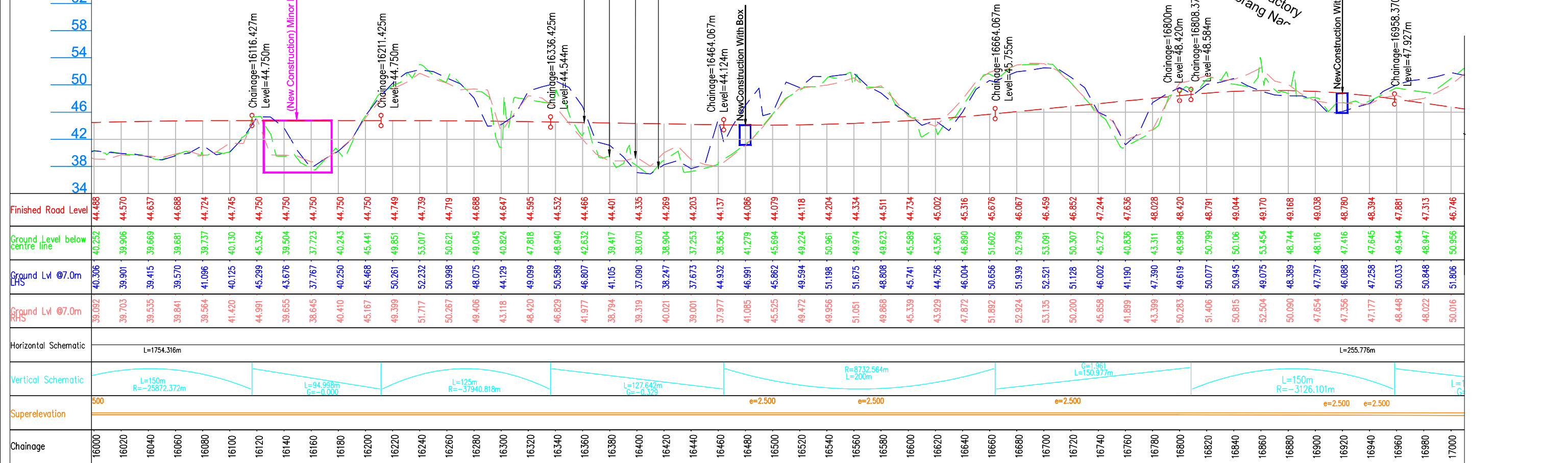





Technocrats Advisory Services Private Limited
in association with Vaishnavi Infotech Services P. Ltd
Flat No. 68, Ajanta Apartment, 36 I.P.Extension
Patparganj, Delhi-110092

KAILASHAHAR

KURTI BRIDGE



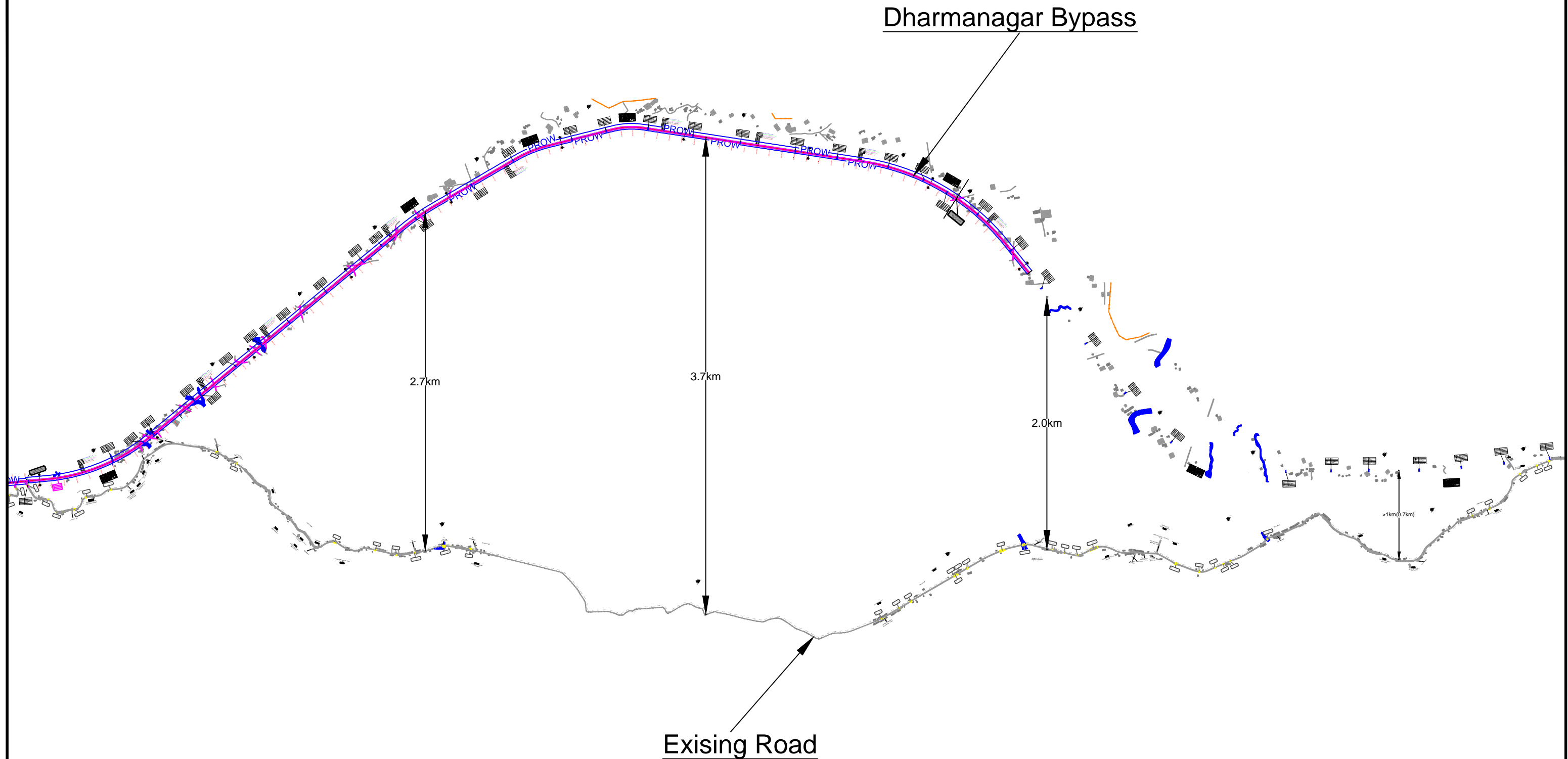


LEGEND : <div><div>PROW</div><div>PROW</div></div> <div><div>Design</div><div></div></div> <div><div>Structure</div><div></div></div> <div><div>Existing Road</div><div></div></div> <div><div>Pond/River</div><div></div></div>		Project Title:- CONSULTANCY SERVICES FOR FEASIBILITY STUDY, PREPARATION OF DETAILED PROJECT REPORT AND PROVIDING PRE-CONSTRUCTION SERVICES FOR UP-GRADATION OF SELECTED ROAD STRETCHES / CORRIDORS TO TWO LANE WITH PAVED SHOULDER NH CONFIGURATION UNDER BHARAT MALA PROJECT AND NATIONAL HIGHWAYS CONNECTIVITY TO BACKWARD AREAS/RELIGIOUS/TOURIST PLACES OF THE COUNTRY IN THE <u>STATE OF TRIPURA.</u> <u>KAILASHAHAR - KURTI BRIDGE SECTION-2</u>	CLIENT:  NATIONAL HIGHWAYS & INFRASTRUCTURE DEVELOPMENT CORPORATION LTD	Drawing Title: PLAN & PROFILE DES.CH. 16+000 TO 17+000 <div><div>Drawing No. :- TASPL/NHIDCL/DPDR/P&P</div><div>Sheet : 17 OF 15</div><div><div>Scale :- 1:2000</div><div><div>Drn</div><div>Dgn.</div><div>Appd</div><div>Deepak</div><div>B.Mishra</div><div>B.S Pandey</div><div>Date</div><div>DEC - 2019</div></div></div></div>	CONSULTANT:  Technocrats Advisory Services Private Limited in association with Vaishnavi Infratech Services P. Ltd Flat No. 68, Ajanta Apartment, 36 I.P.Extension Patparganj, Delhi-110092
--	---	---	---	---	--

KAILASHAHAR

Dharmanagar Bypass LHS (Length - 14.1km)

KURTI BRIDGE



LEGEND :

Design	
Structure	
Existing Road	
Pond/River	



Project Title:-

CONSULTANCY SERVICES FOR FEASIBILITY STUDY, PREPARATION OF DETAILED PROJECT REPORT AND PROVIDING PRE-CONSTRUCTION SERVICES FOR UP-GRADATION OF SELECTED ROAD STRETCHES / CORRIDORS TO TWO LANE WITH PAVED SHOULDER NH CONFIGURATION UNDER BHARAT MALA PROJECT AND NATIONAL HIGHWAYS CONNECTIVITY TO BACKWARD AREAS/RELIGIOUS/TOURIST PLACES OF THE COUNTRY IN THE STATE OF TRIPURA.

KAILASHAHAR - KURTI BRIDGE SECTION-2

CLIENT:



NATIONAL HIGHWAYS & INFRASTRUCTURE
DEVELOPMENT CORPORATION LTD

Drawing Title:

PLAN & PROFILE
Dharmanagar Bypass

Drawing No. :- TASPL/NHIDCL/DDPR/P&P

Scale :- 1:2000

Drn	Dgn.	Appd
Deepak	B.Mishra	B.S Pandey

Sheet :

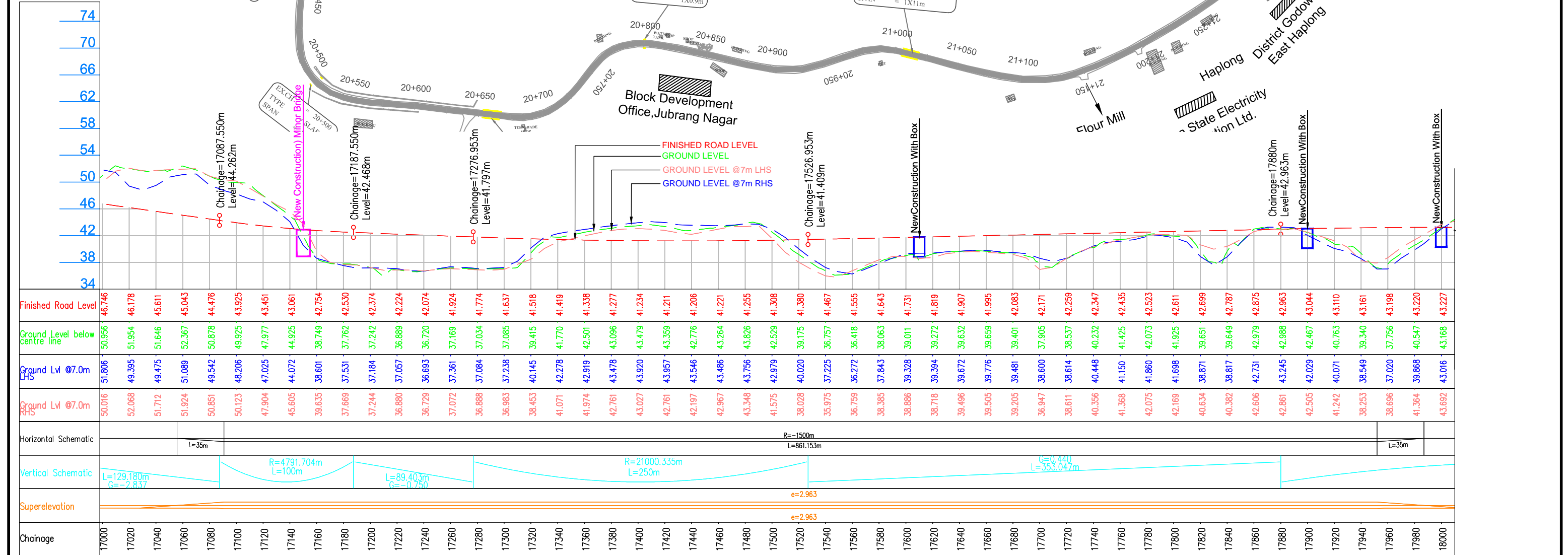
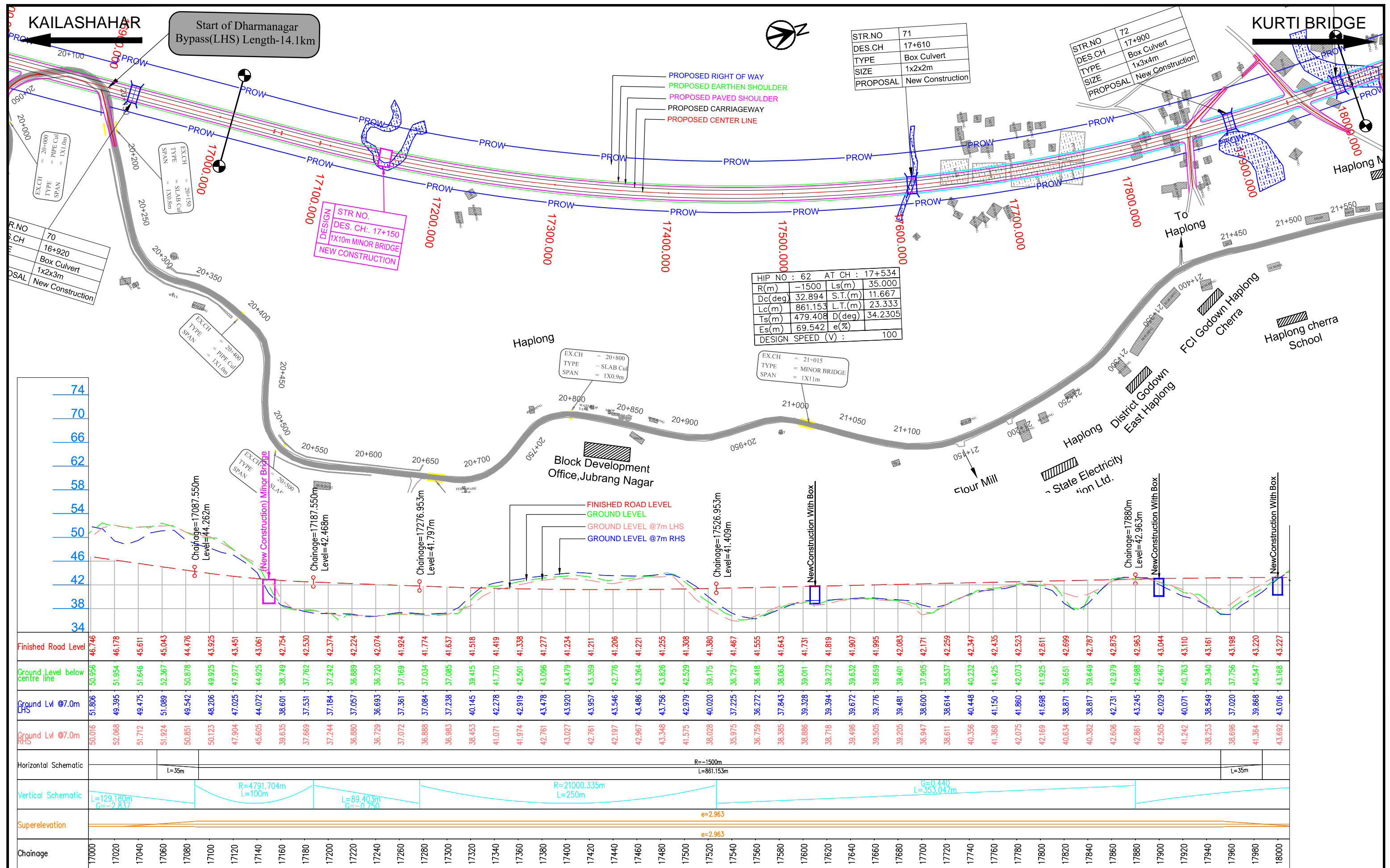
BP OF 15

Date
DEC - 2019

CONSULTANT:



Technocrats Advisory Services Private Limited
in association with Vaishnavi Infratech Services P. Ltd
Flat No. 68, Ajanta Apartment, 36 I.P.Extension
Patparganj, Delhi-110092



LEGEND :

- Design: PROPOSED RIGHT OF WAY, PROPOSED EARTHEN SHOULDER, PROPOSED PAVED SHOULDER, PROPOSED CARRIAGEWAY, PROPOSED CENTER LINE
- Structure: EXISTING ROAD, POND/RIVER

Project Title:-

CONSULTANCY SERVICES FOR FEASIBILITY STUDY, PREPARATION OF DETAILED PROJECT REPORT AND PROVIDING PRE-CONSTRUCTION SERVICES FOR UP-GRADATION OF SELECTED ROAD STRETCHES / CORRIDORS TO TWO LANE WITH PAVED SHOULDER NH CONFIGURATION UNDER BHARAT MALA PROJECT AND NATIONAL HIGHWAYS CONNECTIVITY TO BACKWARD AREAS/RELIGIOUS/TOURIST PLACES OF THE COUNTRY IN THE STATE OF TRIPURA.

KAILASHAHAR - KURTI BRIDGE SECTION-2

CLIENT:

NATIONAL HIGHWAYS & INFRASTRUCTURE DEVELOPMENT CORPORATION LTD

Drawing Title:

PLAN & PROFILE
DES.CH. 17+000 TO 18+000

Drawing No. :- TASPL/NHIDCL/DDPR/P&P

Scale :- 1:2000

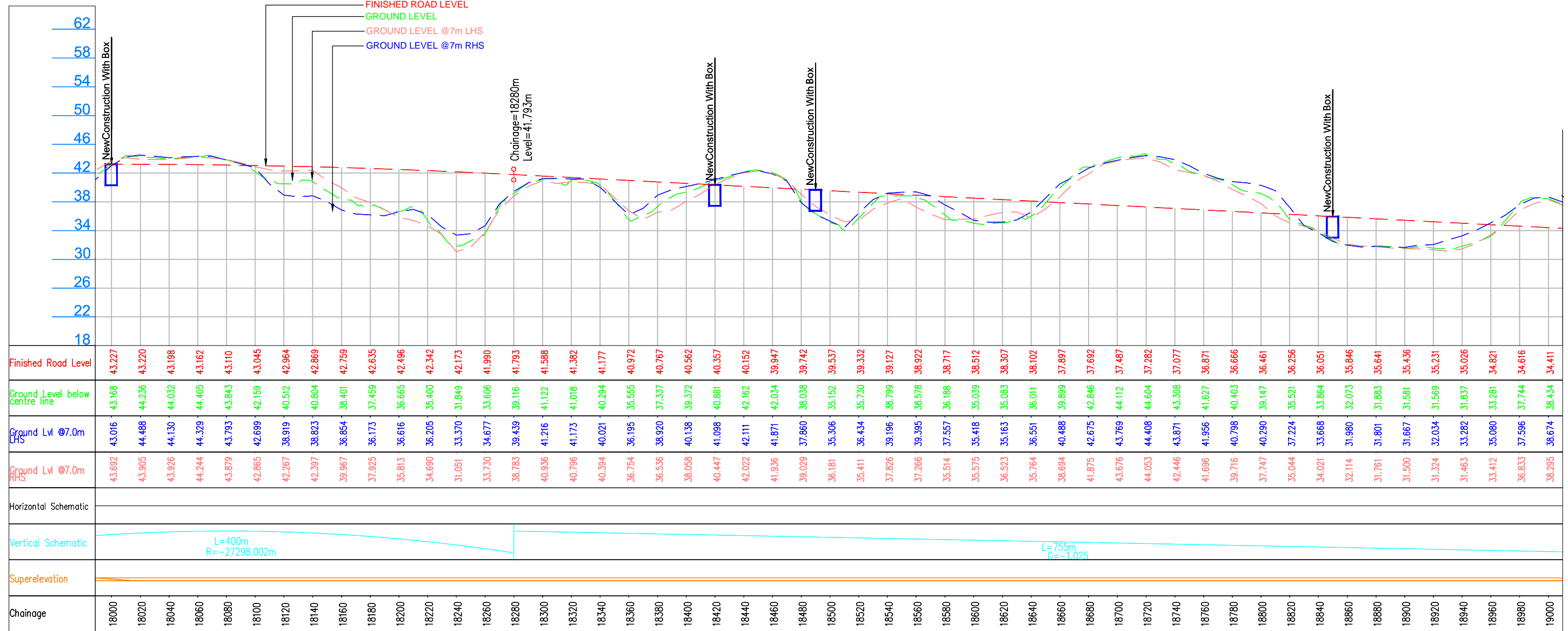
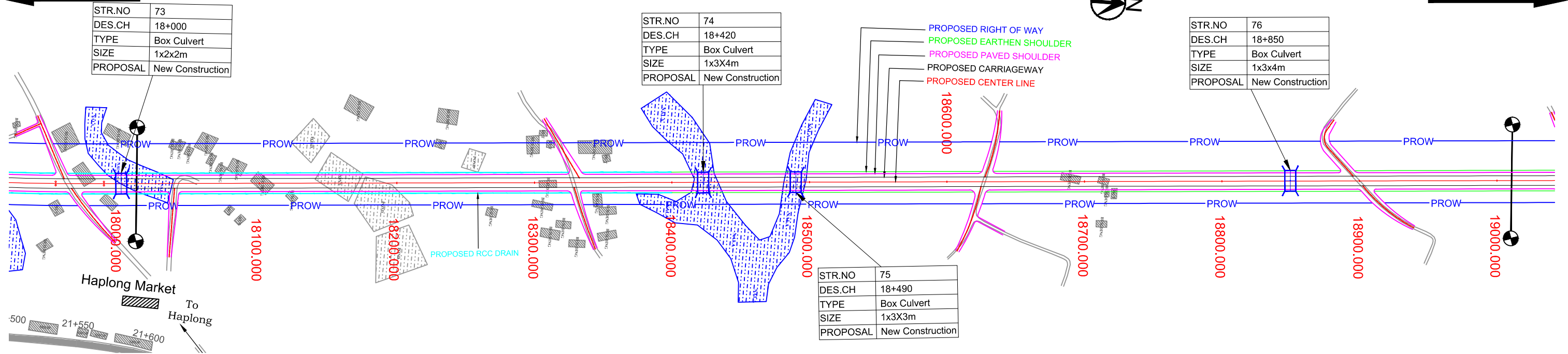
Drn Deepak **Dgn** B.Mishra **Appd** B.S Pandey

CONSULTANT:

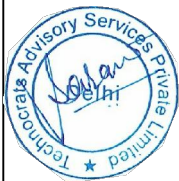
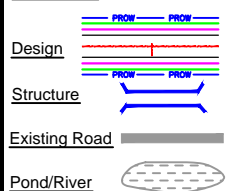
TASPL
Technocrats Advisory Services Private Limited
in association with Vaishnavi Infratech Services P. Ltd
Flat No. 68, Ajanta Apartment, 36 I.P.Extension
Patparganj, Delhi-110092

KAILASHAHAR

KURTI BRIDGE



LEGEND :



Project Title:-

CONSULTANCY SERVICES FOR FEASIBILITY STUDY, PREPARATION OF DETAILED PROJECT REPORT AND PROVIDING PRE-CONSTRUCTION SERVICES FOR UP-GRADATION OF SELECTED ROAD STRETCHES / CORRIDORS TO TWO LANE WITH PAVED SHOULDER NH CONFIGURATION UNDER BHARAT MALA PROJECT AND NATIONAL HIGHWAYS CONNECTIVITY TO BACKWARD AREAS/RELIGIOUS/TOURIST PLACES OF THE COUNTRY IN THE STATE OF TRIPURA.

KAILASHAHAR - KURTI BRIDGE SECTION-2

CLIENT:

NATIONAL HIGHWAYS & INFRASTRUCTURE
DEVELOPMENT CORPORATION LTD

Drawing Title:

PLAN & PROFILE
DES.CH. 18+000 TO 19+000

Drawing No. :-

TASPL/NHIDCL/DDPR/P&P

Sheet :

08 OF 15

Scale :-

1:2000

Drn

Deepak

Dgn.

B.Mishra

Appd

B.S Pandey

Date

DEC - 2019

CONSULTANT:



Technocrats Advisory Services Private Limited
in association with Vaishnavi Infratech Services P. Ltd
Flat No. 68, Ajanta Apartment, 36 I.P.Extension
Patparganj, Delhi-110092

KAILASHAHAR

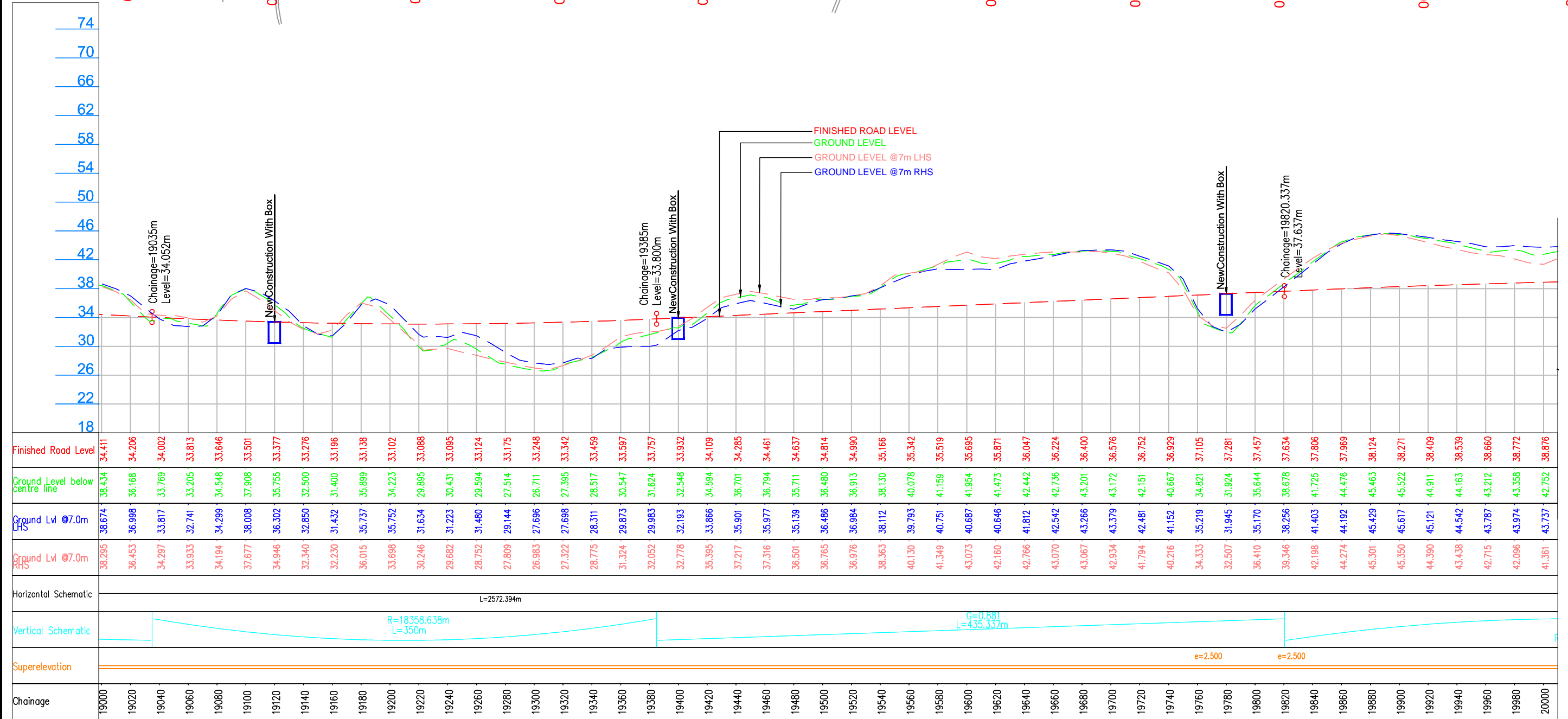
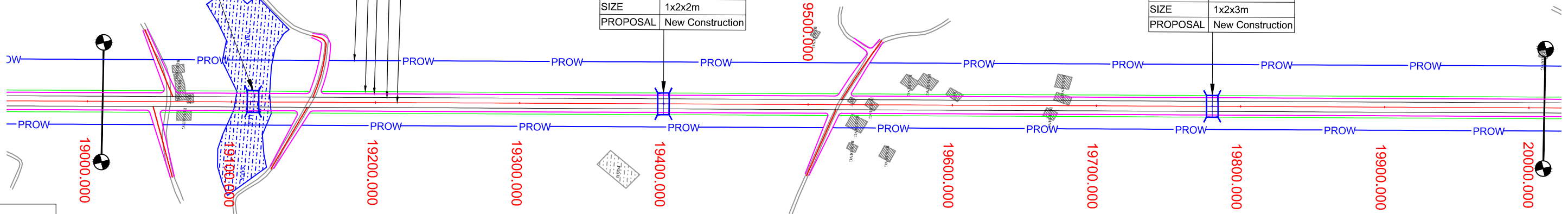
KURTI BRIDGE

STR.NO	77
DES.CH	19+120
TYPE	Box Culvert
SIZE	1x2x2m
PROPOSAL	New Construction

STR.NO	78
DES.CH	19+400
TYPE	Box Culvert
SIZE	1x2x2m
PROPOSAL	New Construction

STR.NO	79
DES.CH	19+780
TYPE	Box Culvert
SIZE	1x2x3m
PROPOSAL	New Construction

PROPOSED RIGHT OF WAY
PROPOSED EARTHEN SHOULDER
PROPOSED PAVED SHOULDER
PROPOSED CARRIAGEWAY
PROPOSED CENTER LINE



LEGEND : Design: PROW, PROW, PROW, PROW Structure: [Box Culvert Symbol] Existing Road: [Road Symbol] Pond/River: [Pond/River Symbol]		Project Title:- CONSULTANCY SERVICES FOR FEASIBILITY STUDY, PREPARATION OF DETAILED PROJECT REPORT AND PROVIDING PRE-CONSTRUCTION SERVICES FOR UP-GRADATION OF SELECTED ROAD STRETCHES / CORRIDORS TO TWO LANE WITH PAVED SHOULDER NH CONFIGURATION UNDER BHARAT MALA PROJECT AND NATIONAL HIGHWAYS CONNECTIVITY TO BACKWARD AREAS/RELIGIOUS/TOURIST PLACES OF THE COUNTRY IN THE STATE OF TRIPURA. KAILASHAHAR - KURTI BRIDGE SECTION-2	CLIENT: NATIONAL HIGHWAYS & INFRASTRUCTURE DEVELOPMENT CORPORATION LTD	Drawing Title: PLAN & PROFILE DES.CH. 19+000 TO 20+000		CONSULTANT: Technocrats Advisory Services Private Limited in association with Vaishnavi Infratech Services P. Ltd Flat No. 68, Ajanta Apartment, 36 I.P.Extension Patparganj, Delhi-110092	
				Drawing No. :- TASPL/NHIDCL/DDPR/P&P		Sheet : 09 OF 15	
				Scale :- 1:2000		Date	
				Drn	Dgn.	Appd	Date
Deepak	B.Mishra	B.S Pandey	DEC - 2019				

KAILASHAHAR

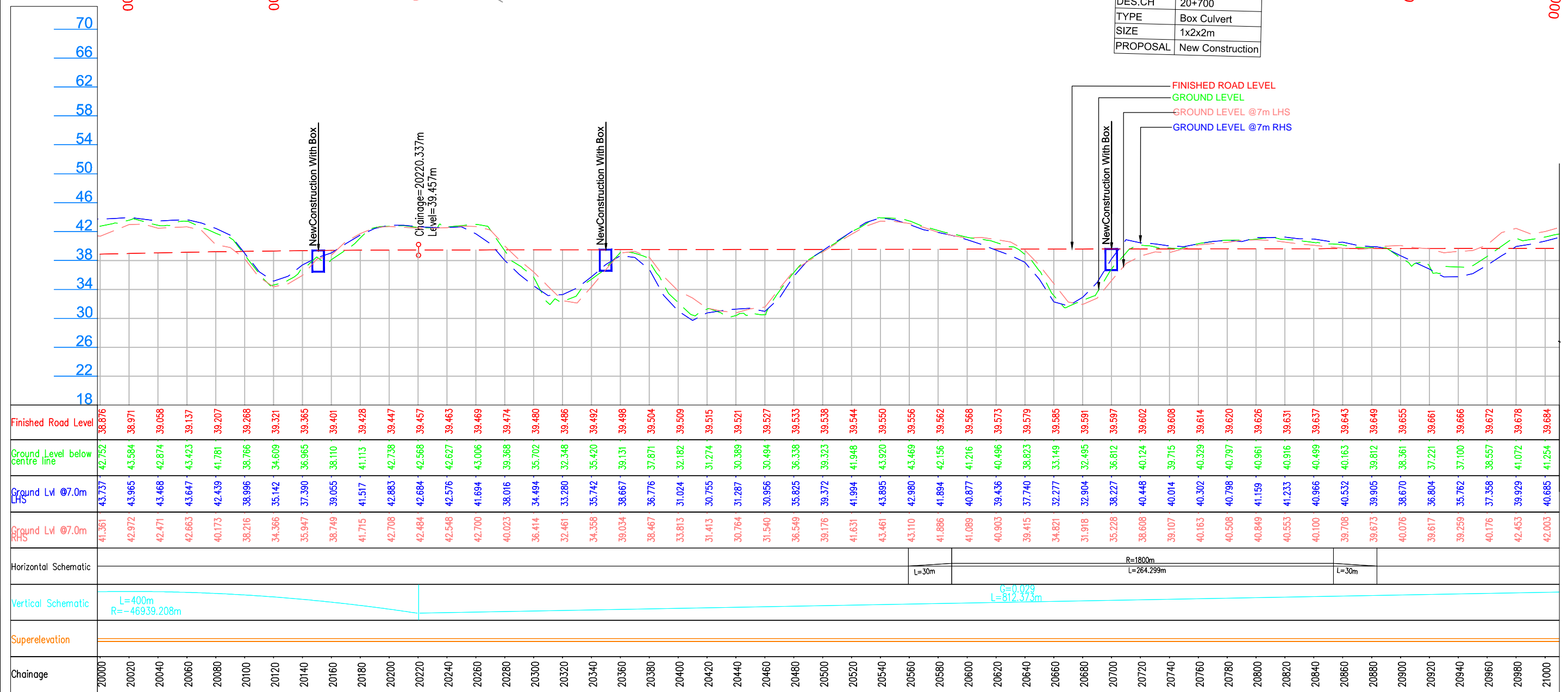
KURTI BRIDGE

STR.NO	80
DES.CH	20+160
TYPE	Box Culvert
SIZE	1x3x4m
PROPOSAL	New Construction

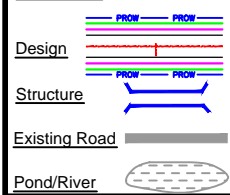
STR.NO	81
DES.CH	20+350
TYPE	Box Culvert
SIZE	1x2x2m
PROPOSAL	New Construction

HIP NO : 63		AT CH : 20+722	
R(m)	1800	Ls(m)	30.000
Dc(deg)	8.413	S.T.(m)	10.000
Lc(m)	264.299	L.T.(m)	20.000
Ts(m)	162.480	D(deg)	9.3678
Es(m)	6.052	e(%)	
DESIGN SPEED (V) :			100

STR.NO	82
DES.CH	20+700
TYPE	Box Culvert
SIZE	1x2x2m
PROPOSAL	New Construction



LEGEND :



Project Title:-

CONSULTANCY SERVICES FOR FEASIBILITY STUDY, PREPARATION OF DETAILED PROJECT REPORT AND PROVIDING PRE-CONSTRUCTION SERVICES FOR UP-GRADATION OF SELECTED ROAD STRETCHES / CORRIDORS TO TWO LANE WITH PAVED SHOULDER NH CONFIGURATION UNDER BHARAT MALA PROJECT AND NATIONAL HIGHWAYS CONNECTIVITY TO BACKWARD AREAS/RELIGIOUS/TOURIST PLACES OF THE COUNTRY IN THE STATE OF TRIPURA.

KAILASHAHAR - KURTI BRIDGE SECTION-2

CLIENT:



NATIONAL HIGHWAYS & INFRASTRUCTURE
DEVELOPMENT CORPORATION LTD

Drawing Title:

PLAN & PROFILE
DES.CH. 20+000 TO 21+000

Drawing No. :- TASPL/NHIDCL/DDPR/P&P

Sheet : 10 OF 15

Scale :- 1:2000

Drn Dgn Appd

Deepak B.Mishra B.S Pandey

Date DEC - 2019

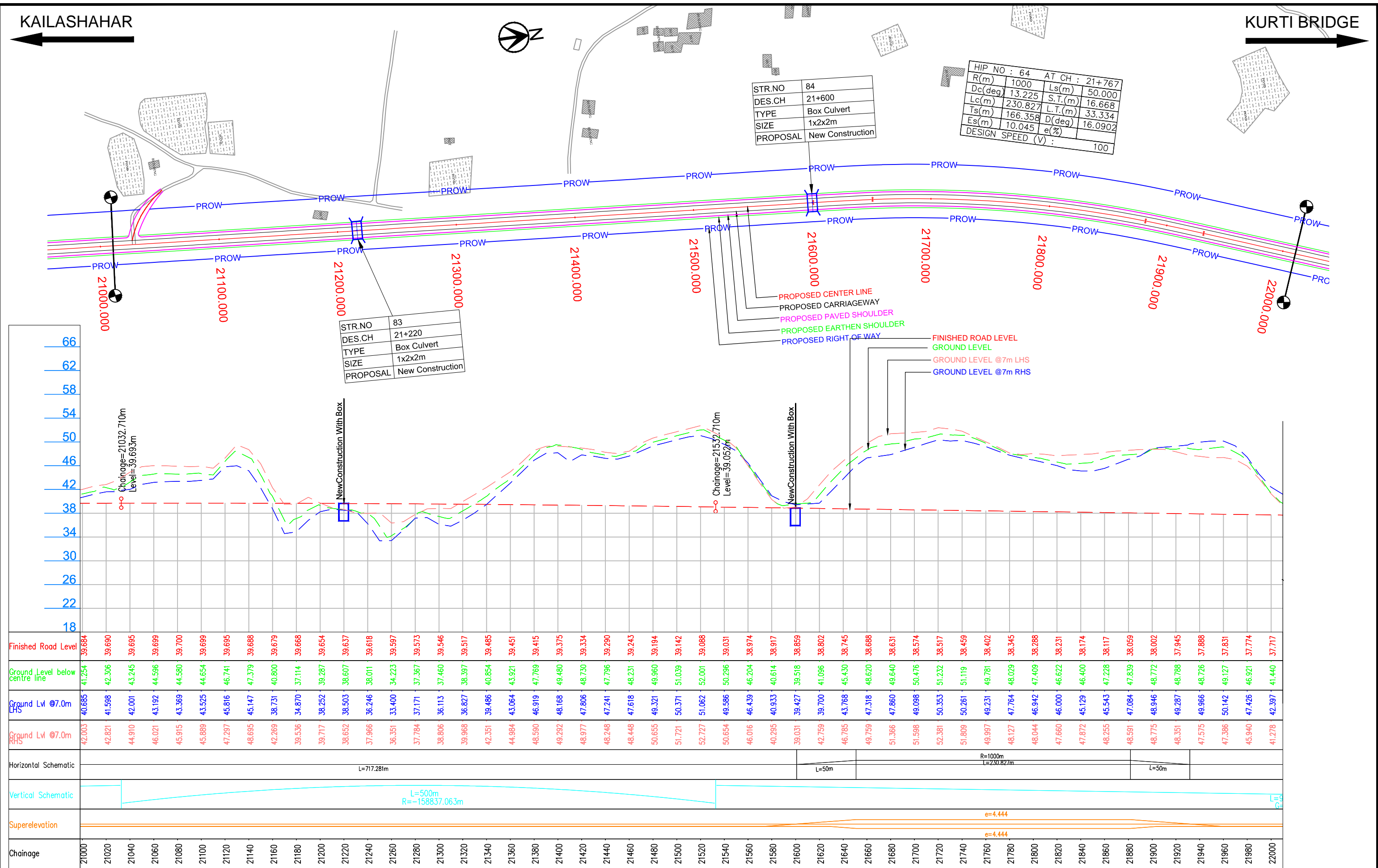
CONSULTANT:



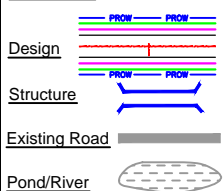
Technocrats Advisory Services Private Limited
in association with Vaishnavi Infratech Services P. Ltd
Flat No. 68, Ajanta Apartment, 36 I.P.Extension
Patparganj, Delhi-110092

KAILASHAHAR

KURTI BRIDGE



LEGEND :



Project Title:-

CONSULTANCY SERVICES FOR FEASIBILITY STUDY, PREPARATION OF DETAILED PROJECT REPORT AND PROVIDING PRE-CONSTRUCTION SERVICES FOR UP-GRADATION OF SELECTED ROAD STRETCHES / CORRIDORS TO TWO LANE WITH PAVED SHOULDER NH CONFIGURATION UNDER BHARAT MALA PROJECT AND NATIONAL HIGHWAYS CONNECTIVITY TO BACKWARD AREAS/RELIGIOUS/TOURIST PLACES OF THE COUNTRY IN THE STATE OF TRIPURA.

KAILASHAHAR - KURTI BRIDGE SECTION-2

CLIENT:



NATIONAL HIGHWAYS & INFRASTRUCTURE
DEVELOPMENT CORPORATION LTD

Drawing Title:

PLAN & PROFILE
DES.CH. 21+000 TO 22+000

Drawing No. :-

TASPL/NHIDCL/DDPR/P&P

Sheet :

11 OF 15

Scale :-

1:2000

Drm

Dgn.

Appd

Deepak

B.Mishra

B.S Pandey

Date

DEC - 2019

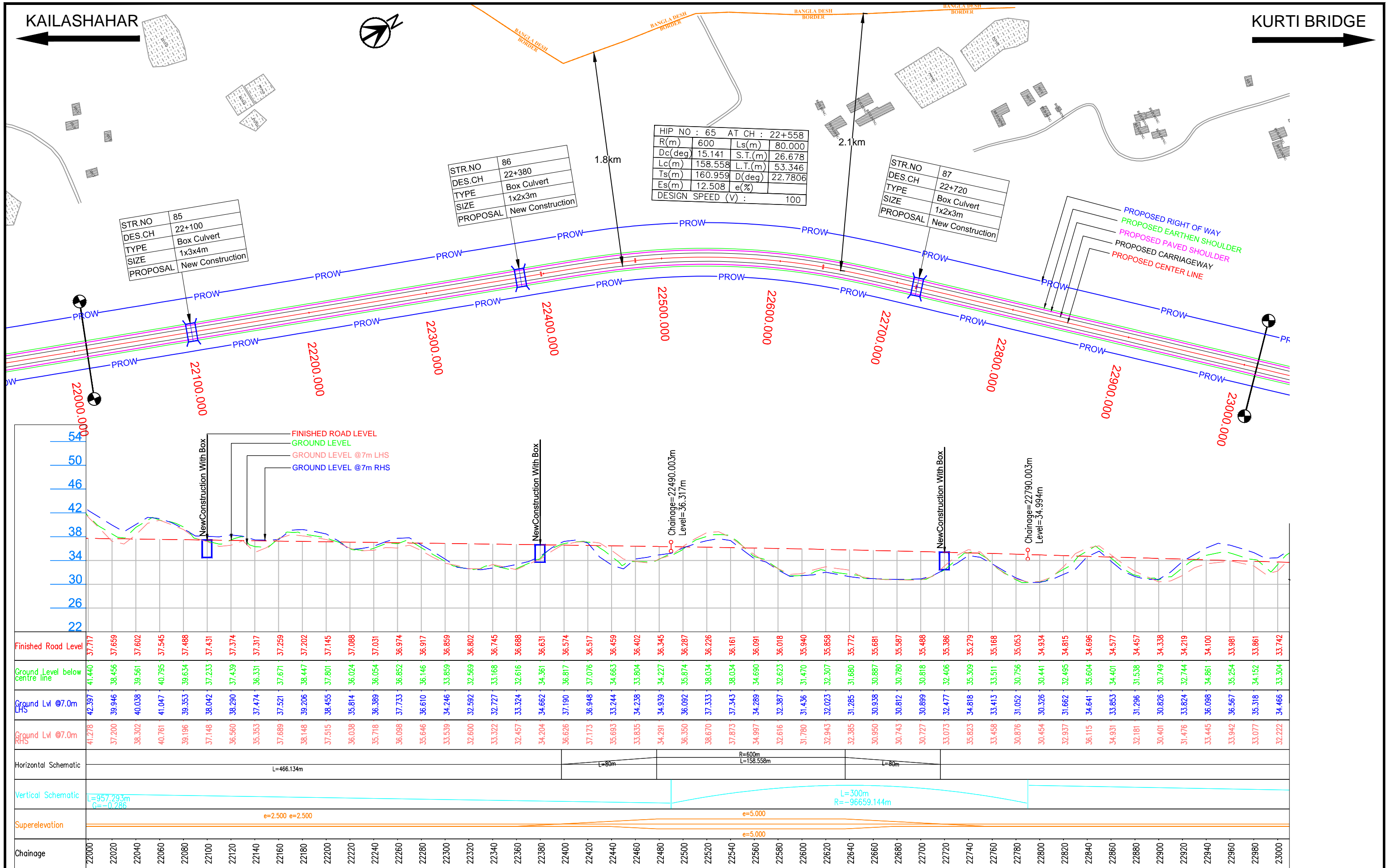
CONSULTANT:



Technocrats Advisory Services Private Limited
in association with Vaishnavi Infratech Services P. Ltd
Flat No. 68, Ajanta Apartment, 36 I.P.Extension
Patparganj, Delhi-110092

KAILASHAHAR

KURTI BRIDGE



LEGEND :

- Design
- Structure
- Existing Road
- Pond/River

Project Title:-

CONSULTANCY SERVICES FOR FEASIBILITY STUDY, PREPARATION OF DETAILED PROJECT REPORT AND PROVIDING PRE-CONSTRUCTION SERVICES FOR UP-GRADATION OF SELECTED ROAD STRETCHES / CORRIDORS TO TWO LANE WITH PAVED SHOULDER NH CONFIGURATION UNDER BHARAT MALA PROJECT AND NATIONAL HIGHWAYS CONNECTIVITY TO BACKWARD AREAS/RELIGIOUS/TOURIST PLACES OF THE COUNTRY IN THE STATE OF TRIPURA.

KAILASHAHAR - KURTI BRIDGE SECTION-2

CLIENT:

NATIONAL HIGHWAYS & INFRASTRUCTURE DEVELOPMENT CORPORATION LTD

Drawing Title:

PLAN & PROFILE
DES.CH. 22+000 TO 23+000

Drawing No. :-

TASPL/NHIDCL/DDPR/P&P

Scale :-

1:2000

Sheet :

12 OF 15

Drn

Deepak

Dgn.

B.Mishra

Appd

B.S Pandey

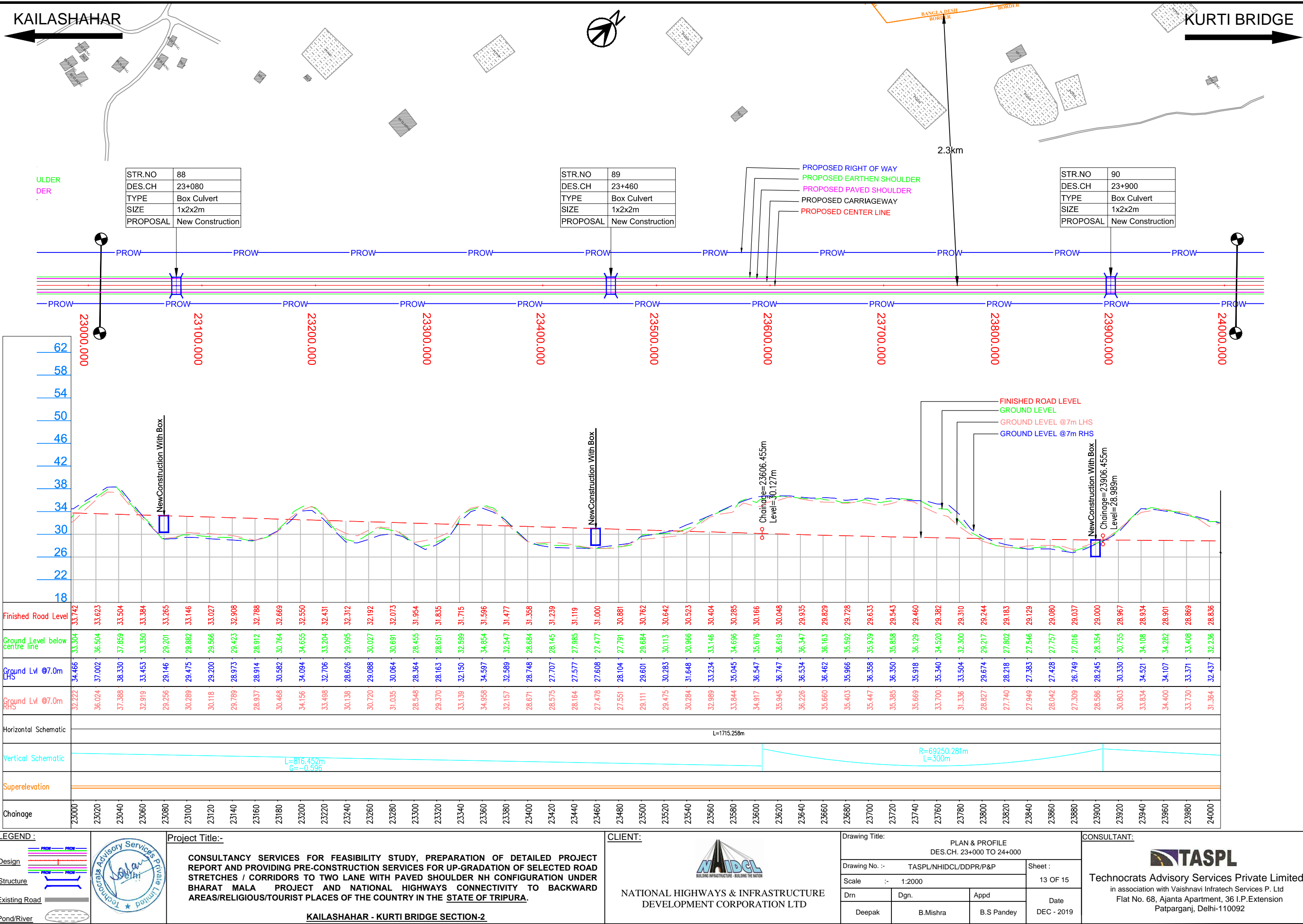
Date

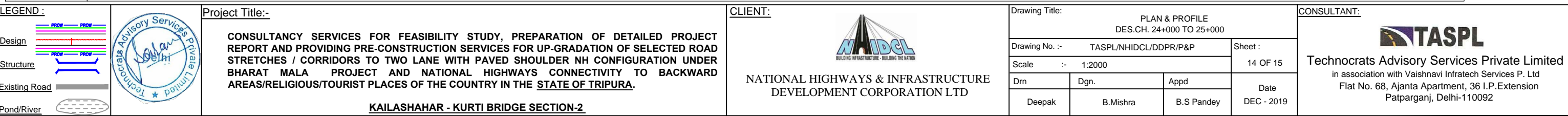
DEC - 2019

CONSULTANT:

TASPL

Technocrats Advisory Services Private Limited
in association with Vaishnavi Infratech Services P. Ltd
Flat No. 68, Ajanta Apartment, 36 I.P.Extension
Patparganj, Delhi-110092





Design

--	--

KAILASHAHAR - KURTI BRIDGE SECTION-2

Drawing No. :-

2

Deepak

PL/NUJGL/DBBB/B&B

	11

--	--

100

in assoc

100

100%

KAILASHAHAR

KURTI BRIDGE

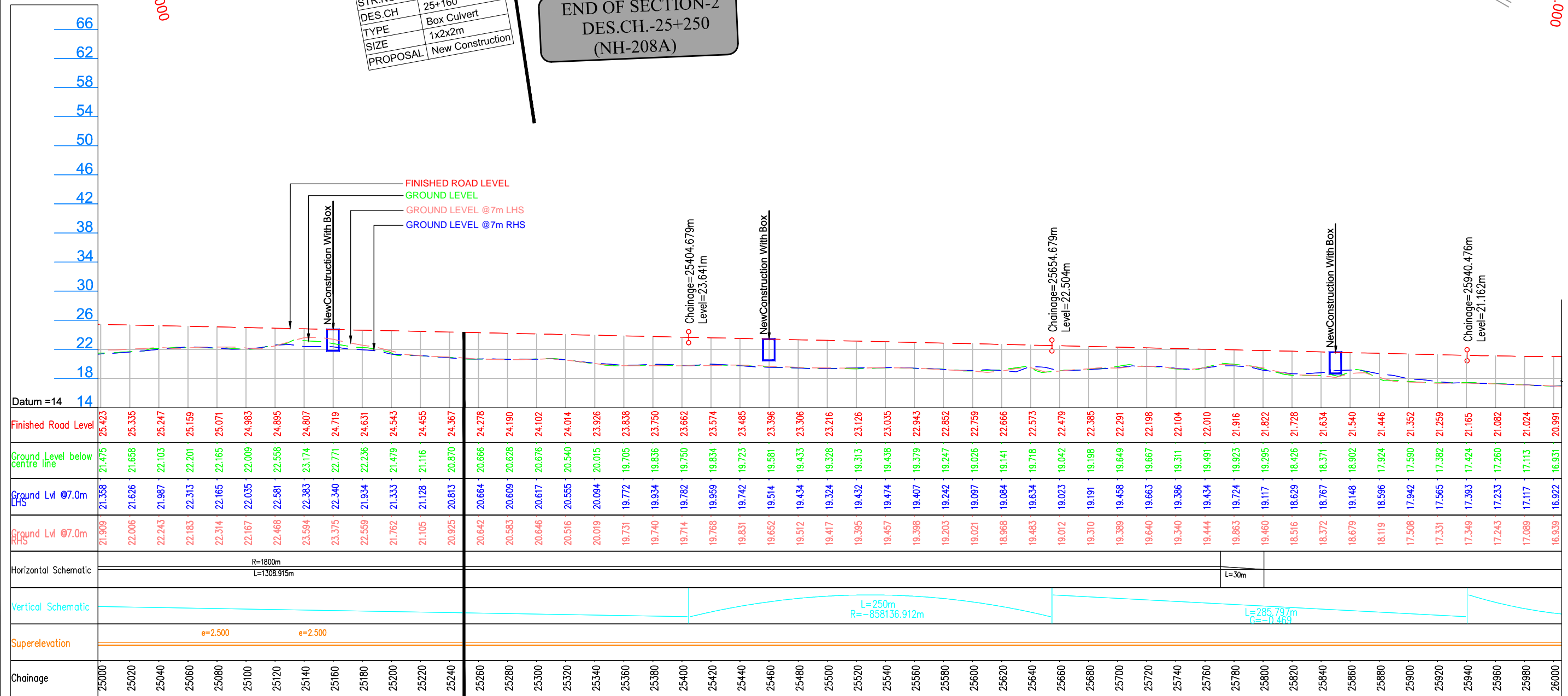
HIP NO : 66	AT CH : 25+147
R(m) 1800	Ls(m) 30.000
Pc(deg) 41.664	S.T.(m) 10.000
Lc(m) 1308.91	SL.T.(m) 20.000
ts(m) 717.143	D(deg) 42.6190
Es(m) 132.118	e(%) 100
DESIGN SPEED (V) :	

STR.NO	65
DES.CH	25+460
TYPE	Box Culvert
SIZE	1x2x3m
PROPOSAL	New Construction

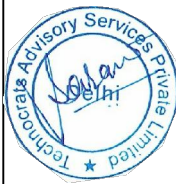
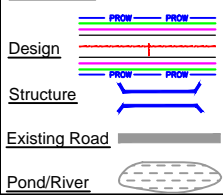
STR.NO	96
DES.CH	25+850
TYPE	Box Culvert
SIZE	1x2x3m
PROPOSAL	New Construction

STR.NO	94
DES.CH	25+160
TYPE	Box Culvert
SIZE	1x2x2m
PROPOSAL	New Construction

END OF SECTION-2
DES.CH.-25+250
(NH-208A)



LEGEND :



Project Title:-

CONSULTANCY SERVICES FOR FEASIBILITY STUDY, PREPARATION OF DETAILED PROJECT REPORT AND PROVIDING PRE-CONSTRUCTION SERVICES FOR UP-GRADATION OF SELECTED ROAD STRETCHES / CORRIDORS TO TWO LANE WITH PAVED SHOULDER NH CONFIGURATION UNDER BHARAT MALA PROJECT AND NATIONAL HIGHWAYS CONNECTIVITY TO BACKWARD AREAS/RELIGIOUS/TOURIST PLACES OF THE COUNTRY IN THE STATE OF TRIPURA.

KAILASHAHAR - KURTI BRIDGE SECTION-2

CLIENT:



NATIONAL HIGHWAYS & INFRASTRUCTURE
DEVELOPMENT CORPORATION LTD

Drawing Title:

PLAN & PROFILE
DES.CH. 25+000 TO 26+000

Drawing No. :-

TASPL/NHIDCL/DDPR/P&P

Sheet :

15 OF 15

Scale :-

1:2000

Drm

Dgn.

Appd

Date

Deepak

B.Mishra

B.S Pandey

DEC - 2019

CONSULTANT:



Technocrats Advisory Services Private Limited

in association with Vaishnavi Infratech Services P. Ltd
Flat No. 68, Ajanta Apartment, 36 I.P.Extension
Patparganj, Delhi-110092